



Tech Service Hotline Number
1-800-888-3743
E-mail address
techservice@finishthompson.com

TBP Installation and Maintenance Instructions

Installation

Remove the drum pump and motor from its packaging and inspect for shipping damage. Remove the quality tag from the top of the pump and spin the pump coupling to verify there is no binding. Remove the black rubber coupling insert (item 1) from the attached plastic bag, and install it onto the pump coupling. Adjust the coupling so that the empty slots in the insert are at 3 and 9 o'clock with the pump discharge at 12 o'clock. Remove the 2 mounting bolts from the motor/motor mount and adjust the motor coupling so that the coupling prongs are at 3 and 9 o'clock with the handle (on electric motors), or the air supply line (on air motors) at 6 o'clock. Install the motor onto the drum pump until it seats all the way down with the couplings connecting and install the 2 mounting bolts with nuts. Attach discharge hose and install into the container.

Maintenance Disassembly

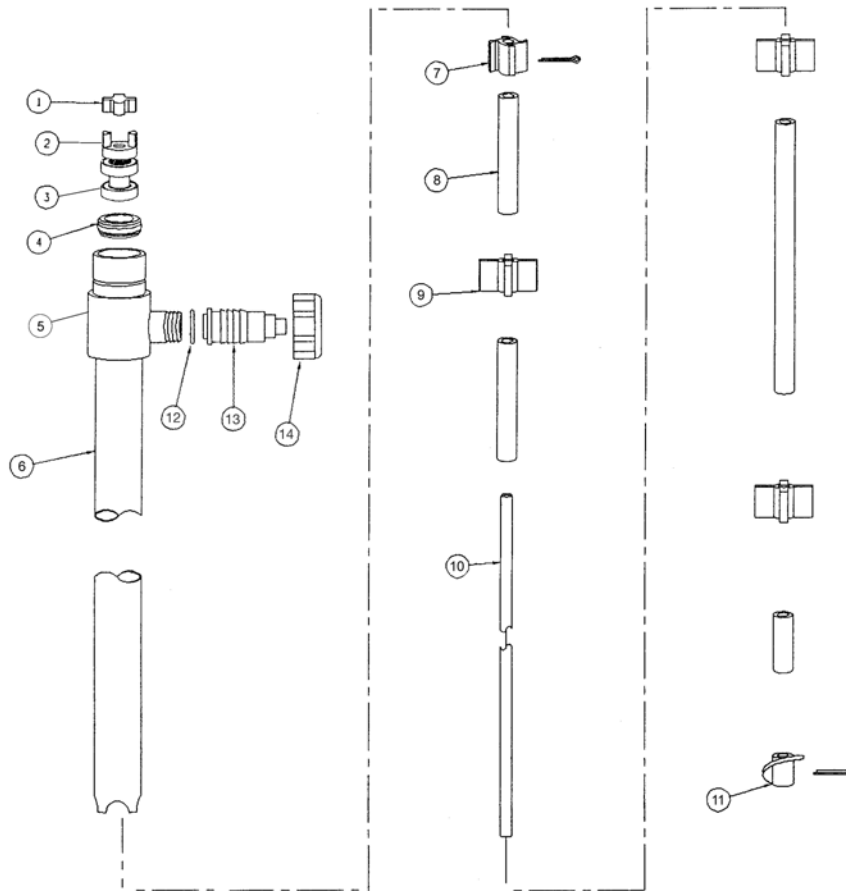
1. Carefully place the pump head (item 5) in a vice (do not crush), and unthread the intake tube (item 6) by turning it clockwise (left hand thread). Pull the intake tube (item 6) carefully off the bottom of the pump shaft.
2. Holding the pump coupling half (item 2) in one hand, unthread the pump shaft (item 10) from the bearing assembly (item 3) by turning it counterclockwise (right hand threads).
3. Remove the bearing assembly (item 3) and the seal assembly (item 4) from the pump head (item 5) being careful not to damage the threaded area at the bottom of the bearing assembly. Discard the seal assembly (never reuse the seal).

Inspection

1. Visually inspect the compressor (item 11), and the 3 center bearings (item 9) for wear or damage. Replace as needed.
2. Inspect the bearing assembly (item 3) for rust, corrosion, or tightness. Replace as needed.
3. Inspect the pump shaft in the seal area for wear and replace as needed.

Reassembly -

1. Install the intake tube (item 6) into the pump head (item 5) by threading it counterclockwise (left hand threads).
2. Insert the pump shaft assembly up through the bottom of the intake tube until the threaded part of the shaft sticks out slightly from the pump head.
3. Thread the sleeve part of the installation tools onto the threaded end of the pump shaft (item 10).
4. Warm up the seal assembly (item 4) with a heat lamp or by soaking it in hot water to aid in the installation process.
5. Insert the pusher part of the installation tool into the slotted side of the seal. Slide the seal over the sleeve and onto the shaft so that the lip in the center of the seal is facing the bottom of the pump. Push the seal just past the end of the sleeve onto the shaft.
6. Remove the sleeve from the end of the pump shaft and thread on the bearing assembly. Carefully press the bearing assembly into the pump head, until the top of the bearings are flush with the top of the pump head.
7. Spin the coupling half to verify there is no binding inside the pump.



Item	Description	Part Number
1	Coupling Insert	J100014
2	Half Coupling	J100012
3*	Bearing Assembly w/ Roll Pin	A101110
4*	Seal Assembly	A103186
5	Pump Head	M102222
6	Intake Tube - 40"	M102221-2
6	Intake Tube - 27"	M102221-1
7	Impeller Assembly w/Inconel Pin	A103190
8	Spacer Set - 27"	A103189-1
8	Spacer Set - 40"	A103189-2
9*	Center Bearing	M100039-1
10	Main Shaft - 40"	M102219-2
10	Main Shaft - 27"	M102219-1
11	Compressor w/Inconel Pin	A103191
12	Discharge o-ring	J100991
13	Spout M100028-2	
14	Discharge Nut	M101610-2

NOTE: The TBP ships with a variable orifice.
To vary flow, trim steps.
Step 1 restricts flow to 5 GPM (No trim required)
Step 2 - 10 GPM
Step 3 - 15 GPM
Step 4 is the maximum opening

* Recommended Spare Parts